

Adviser Ratings Database Report

Q2 2023



AR data

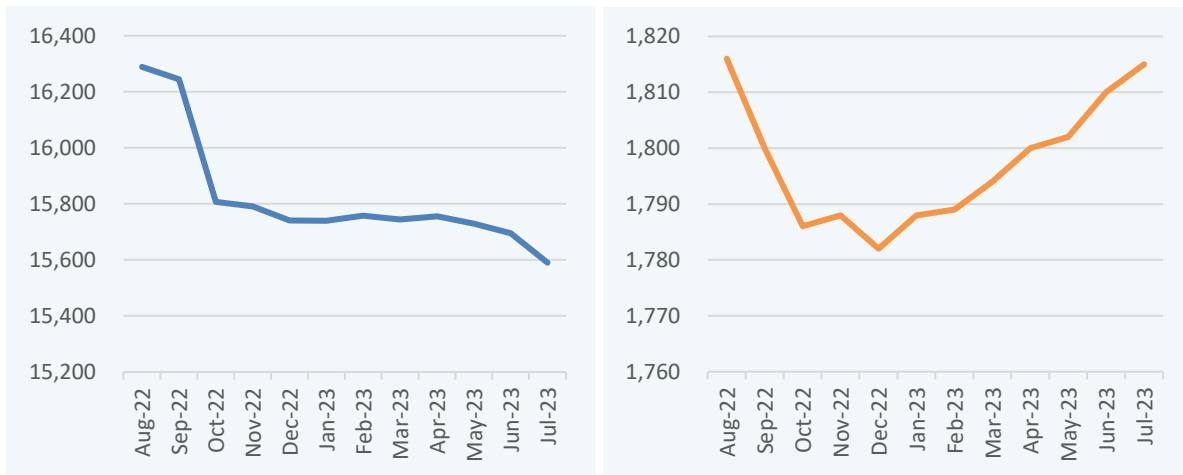
1. Nightingale Dataset Changes

Overall	April -23	July-23	Dif #	Dif %
Advisers	15,756	15,590	(-166)	-4.3%
Practices	6,243	6,173	(-70)	-4.8%
Licensees	1,800	1,815	+15	-0.1%

Number of Advisers

Number of Licensees

Number of Authorised Advisers/Licensees on the ASIC Financial Adviser Register – Not including FX & Timeshare

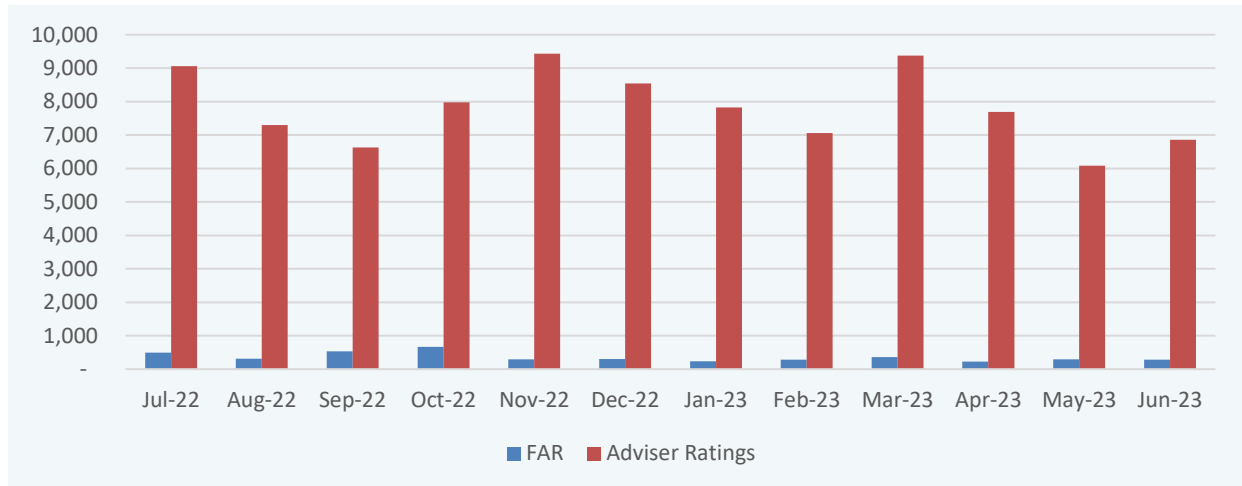


Nightingale Database Updates

△	Adviser Level			Practice Level			Licensee Level		
	New	Edited	Removed	New	Edited	Removed	New	Edited	Removed
Email	400	367	73	216	40	8	48	3	1
Address	233	1,828	-	118	597	-	39	18	-
Key Contact	-	-	-	118	108	-	39	49	-
Landline	258	343	33	130	67	9	39	8	-
Mobile	345	39	1	-	-	-	-	-	-
Website	-	-	-	189	65	20	45	12	-
LinkedIn	297	54	19	141	12	17	45	2	2
Facebook	388	1	56	181	9	18	42	-	2
Twitter	237	-	6	124	-	13	40	-	-
Practice	233	420	400	-	-	-	-	-	-
Licensee	233	327	400	-	-	-	-	-	-
Unique	2,977			956			83		

Adviser Checks

Number of Financial Adviser changes per month on the ASIC FAR v the number of checks by Adviser Ratings*



*Updates by Adviser Ratings includes in-depth analysis of the ASIC FAR, research, email mining and through Adviser engagement.

2. Nightingale Dataset Coverage

Adviser, Practice & Licensee Contact Statistics

Completeness of key Adviser, Practice & Licensee data fields in the Adviser Ratings Nightingale Contacts database

Contact	Adviser Level			Practice Level			Licensee Level		
	Apr-23	Jul-23	%	Apr-23	Jul-23	%	Apr-23	Jul-23	%
Emails	94%	95%	0.4%	82%	83%	1.1%	73%	74%	0.9%
Addresses	100%	100%	0.0%	100%	100%	0.0%	100%	100%	0.0%
Landline	95%	95%	-0.1%	88%	87%	-0.2%	94%	94%	0.4%
Mobile	60%	60%	0.4%	73%	73%	0.2%	67%	67%	0.3%
Socials	89%	90%	0.3%	90%	90%	0.5%	88%	87%	-0.5%

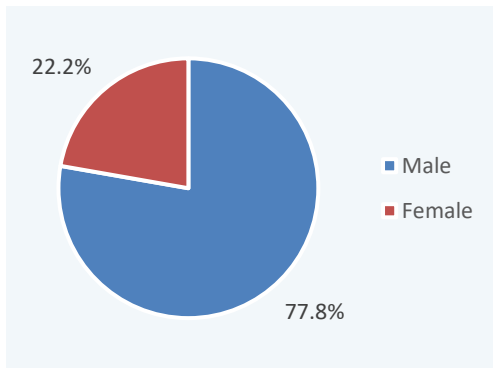
Adviser, Practice & Licensee Insight Statistics

Completeness of key Adviser, Practice & Licensee data fields in the Adviser Ratings Nightingale Insights database

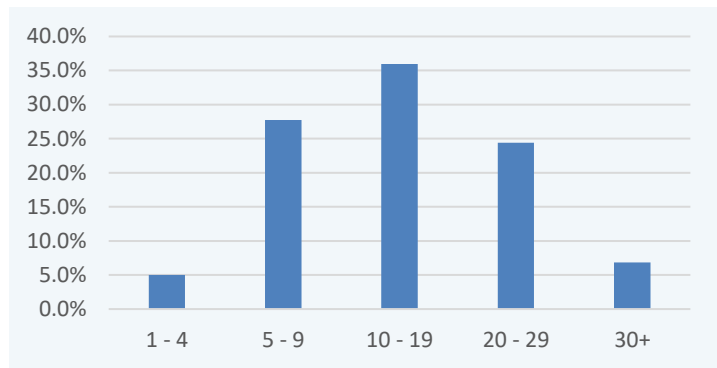
Insights	Adviser Level			Practice Level			Licensee Level		
	Apr-23	Jul-23	%	Apr-23	Jul-23	%	Apr-23	Jul-23	%
Funds Under Advice	100%	100%	0.0%	100%	100%	0.0%	100%	100%	0.0%
Number of Clients	100%	100%	0.0%	100%	100%	0.0%	100%	100%	0.0%
Expertise	25%	25%	0.6%						
Memberships	73%	73%	-0.5%						
In-Force Premium	21%	21%	0.0%	24%	24%	0.0%			
Min. Investment	35%	35%	-0.1%						
Min. Income	32%	32%	0.0%						
Admin. Platform	85%	85%	-0.3%	82%	82%	-0.5%	41%	40%	-0.8%
Life Insurer	78%	77%	-0.4%	78%	77%	-0.4%	32%	31%	-0.6%
Software Supplier	84%	84%	-0.3%	81%	81%	-0.4%	39%	38%	-0.7%
Research House	84%	84%	-0.2%	81%	80%	-0.5%	38%	37%	-0.7%
Inv. Consultant	69%	68%	-0.4%	70%	69%	-0.7%	20%	19%	-0.4%
APL	84%	83%	-0.6%	80%	80%	-0.7%	42%	41%	-0.8%

3. Adviser Universe Insights

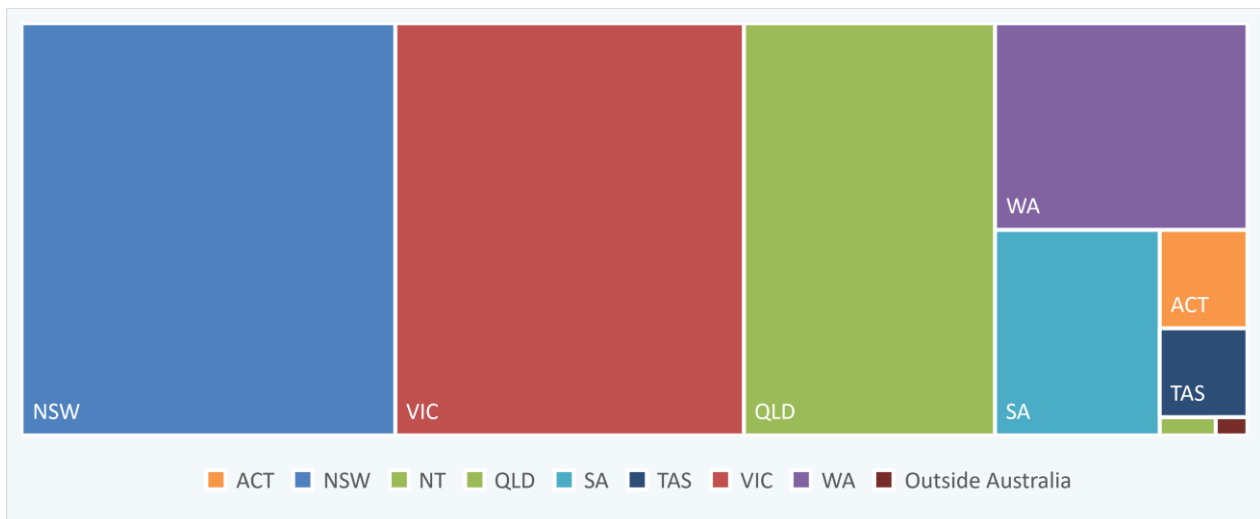
Gender Distribution



Years of Experience



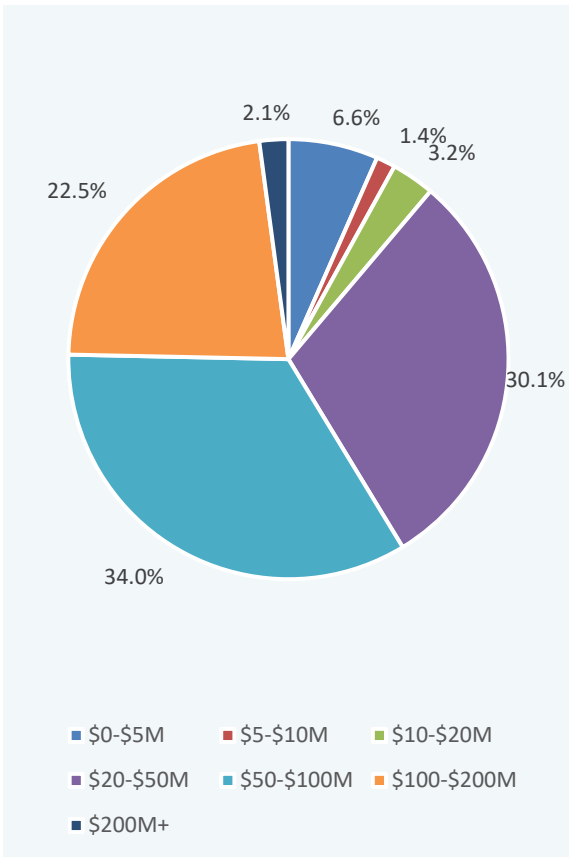
State Distribution



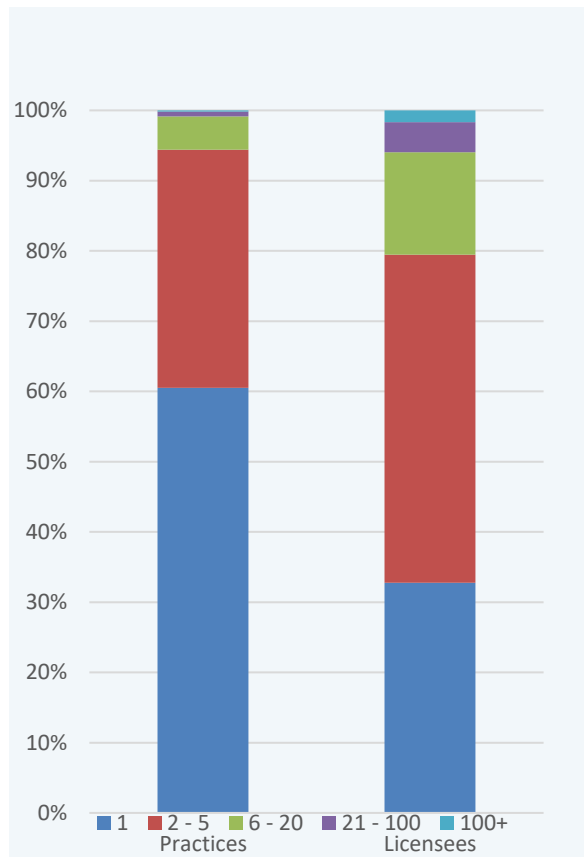
Practice Size v FUA

	\$0-\$5M	\$5-\$20M	\$20-\$50M	\$50-\$100M	\$100-\$200M	\$200-\$500M	\$500M+
1 Adviser	1.7%	4.7%	17.6%	20.9%	14.5%	1.1%	0.0%
2 – 5 Advisers	0.0%	0.3%	0.9%	5.2%	13.9%	12.6%	1.0%
6 – 20 Advisers	0.0%	0.0%	0.0%	0.0%	0.0%	1.8%	2.9%
21 – 100 Advisers	0.0%	0.0%	0.0%	0.0%	0.0%	0.0%	0.7%
100+ Advisers	0.0%	0.0%	0.0%	0.0%	0.0%	0.0%	0.2%

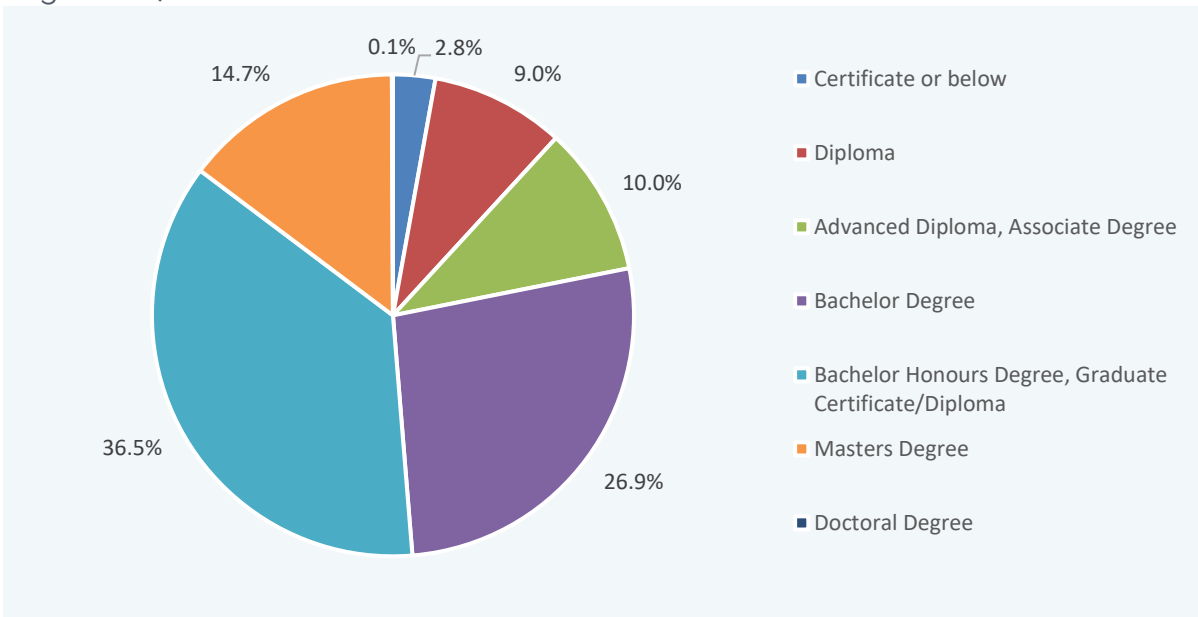
FUA Distribution



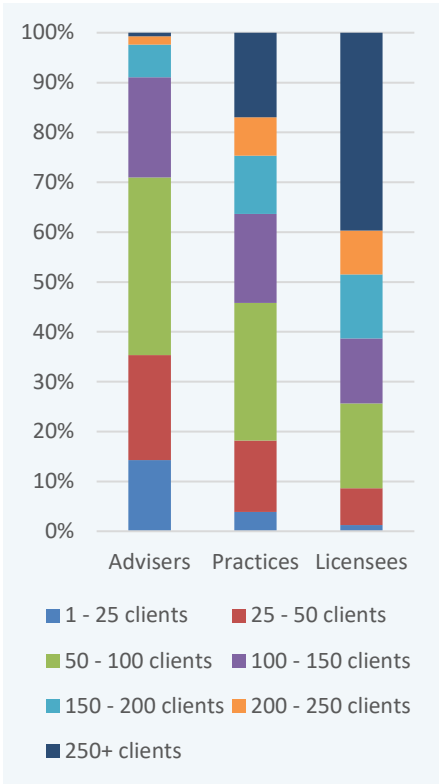
Advisers per Practice/Licensee



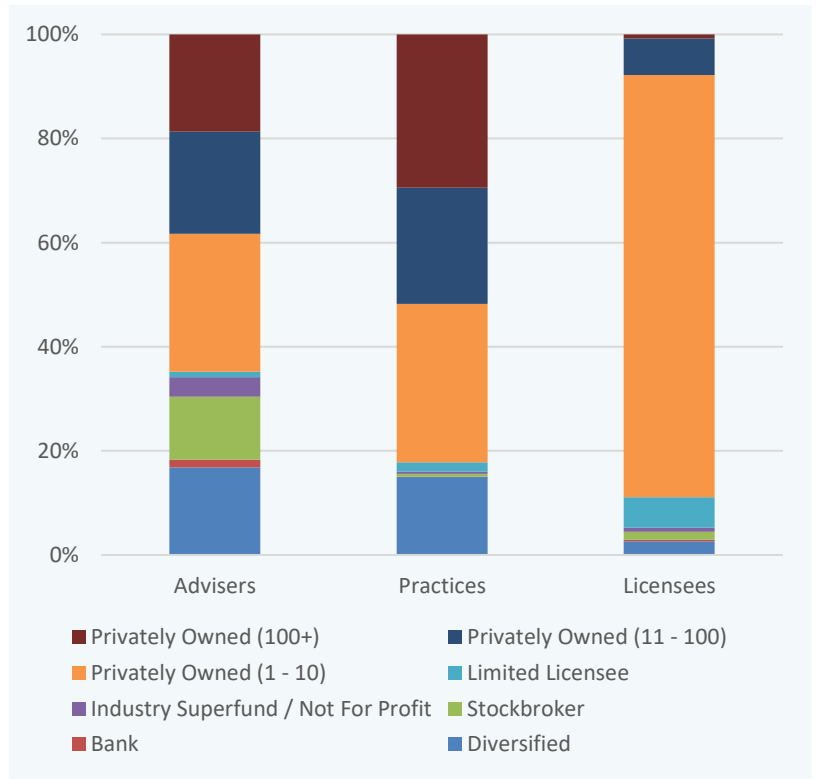
Highest Qualification Distribution



Number of Clients



Licensee Segment





Katie Dukes – Service Delivery Manager
katie@adviserratings.com.au
02 8083 0974

Nicolas Peña Mc Gough – Econometrician
nicolas@adviserratings.com.au

Level 22, Tower 3,
300 Barangaroo Avenue, Sydney